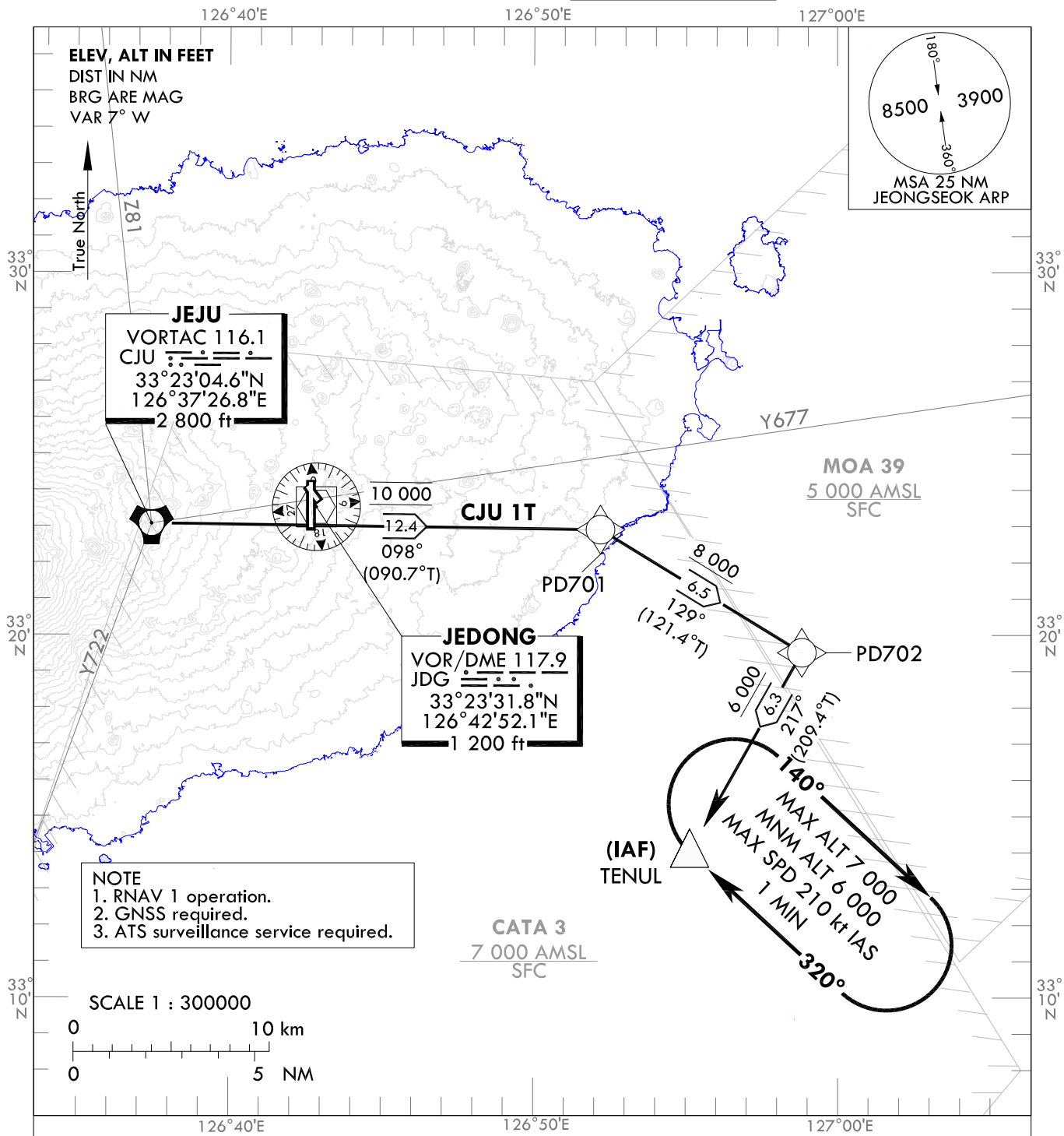


STANDARD ARRIVAL CHART
INSTRUMENT (STAR) - ICAO

TRANSITION ALT 14 000
TRANSITION LVL FL 140

JEJU APP 121.2
124.05
JEONGSEOK TWR 124.35

JEJU/Jeongseok(RKPD)
RWY 01
RNAV CJU 1T



GENERAL INFORMATION

1. Within JEJU TMA, maximum 250 kt IAS below 10 000 ft.
2. Maximum holding speed 210 kt IAS at TENUL.

RNAV JEJU ONE TANGO ARRIVAL : CJU - PD701 - PD702 - TENUL

Change : Withdrawal of STAR(TODAL 1T) and Y579.

JEJU/Jeongseok(RKPD)

RWY 01

RNAV CJU 1T

AERONAUTICAL DATA TABULATION

Standard Instrument Arrival Procedure Coding Tables

RNAV CJU 1T

Serial Number	Path Descriptor	Waypoint Identifier	Fly-over	Course/Track °M(°T)	Distance (NM)	Turn direction	Altitude (ft)	Speed (kt)	Coordinates	VPA/RDH	Navigation specification	Remarks
001	IF	CJU	-	-	-	-	@10 000	-	33°23'04.6"N 126°37'26.8"E	-	RNAV 1	-
002	TF	PD701	-	098(090.7)	12.4	-	@10 000	-	33°22'54.9"N 126°52'12.5"E	-	RNAV 1	-
003	TF	PD702	-	129(121.4)	6.5	-	+8 000	-	33°19'31.4"N 126°58'49.6"E	-	RNAV 1	-
004	TF	TENUL	-	217(209.4)	6.3	-	-7 000 +6 000	-	33°14'01.6"N 126°55'08.7"E	-	RNAV 1	IAF

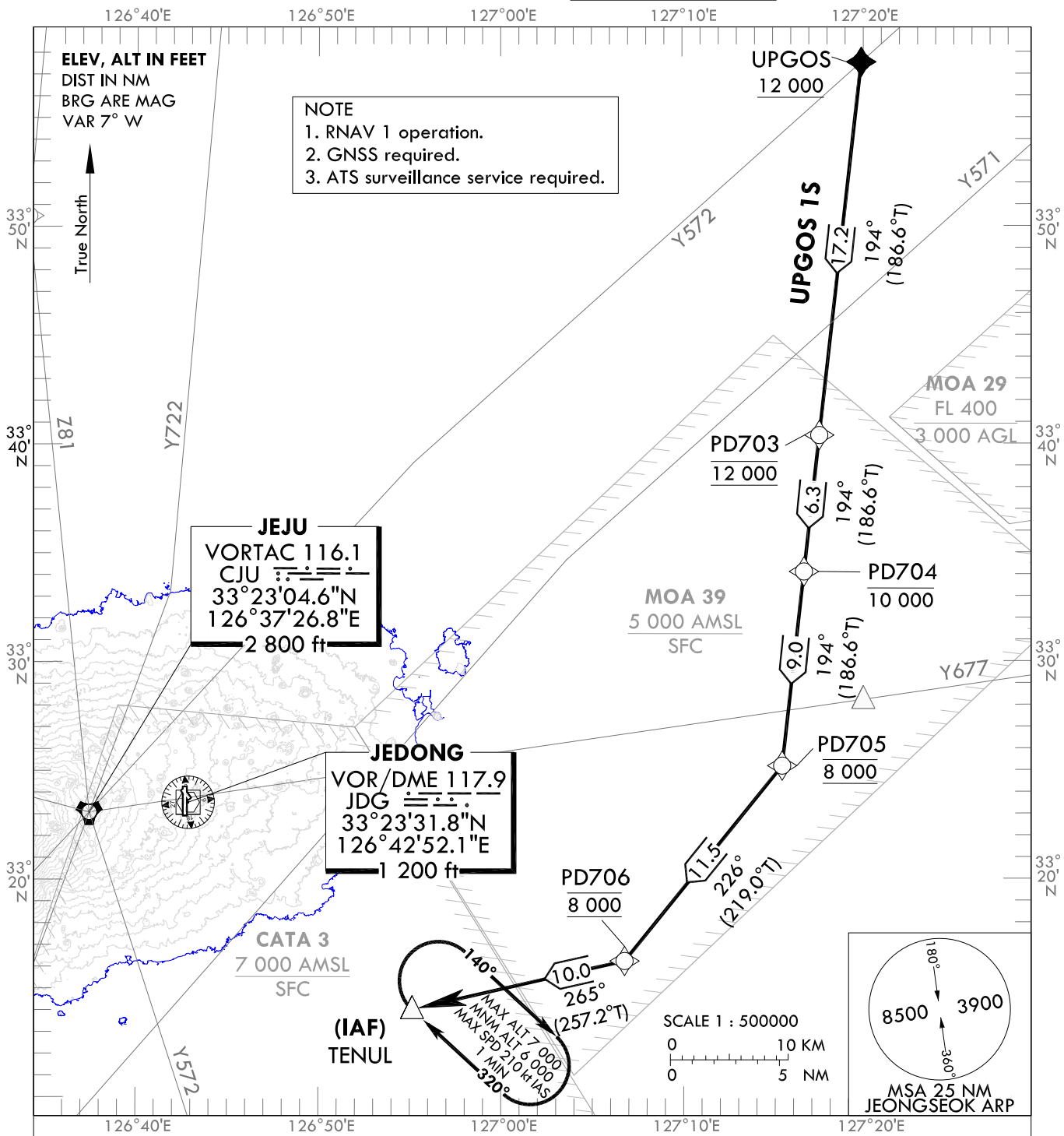
Change : Withdrawal of STAR(TODAL 1T) and Amended phrase(VPA/TCH → VPA/RDH).

STANDARD ARRIVAL CHART
INSTRUMENT (STAR) - ICAO

TRANSITION ALT 14 000
TRANSITION LVL FL 140

JEJU APP 121.2
124.05
JEONGSEOK TWR 124.35

JEJU/Jeongseok(RKPD)
RWY 01
RNAV UPGOS 1S



GENERAL INFORMATION

1. Within JEJU TMA, maximum 250 kt IAS below 10 000 ft.
2. Maximum holding speed 210 kt IAS at TENUL.

RNAV UPGOS ONE SIERRA ARRIVAL : UPGOS - PD703 - PD704 - PD705 - PD706 - TENUL

JEJU/Jeongseok(RKPD)
RWY 01
RNAV UPGOS 1S

AERONAUTICAL DATA TABULATION

Standard Instrument Arrival Procedure Coding Tables

RNAV UPGOS 1S

Serial Number	Path Descriptor	Waypoint Identifier	Fly-over	Course/Track °M(°T)	Distance (NM)	Turn direction	Altitude (ft)	Speed (kt)	Coordinates	VPA/RDH	Navigation specification	Remarks
001	IF	UPGOS	-	-	-	-	+12 000	-	33°57'33.3"N 127°19'53.0"E	-	RNAV 1	-
002	TF	PD703	-	194(186.6)	17.2	-	@12 000	-	33°40'24.4"N 127°17'30.8"E	-	RNAV 1	-
003	TF	PD704	-	194(186.6)	6.3	-	-10 000	-	33°34'08.4"N 127°16'39.0"E	-	RNAV 1	-
004	TF	PD705	-	194(186.6)	9.0	-	@8 000	-	33°25'12.9"N 127°15'25.6"E	-	RNAV 1	-
005	TF	PD706	-	226(219.0)	11.5	-	@8 000	-	33°16'14.9"N 127°06'46.3"E	-	RNAV 1	-
006	TF	TENUL	-	265(257.2)	10.0	-	-7 000 +6 000	-	33°14'01.6"N 126°55'08.7"E	-	RNAV 1	IAF

HOLDING PROCEDURE

Holding Identification	Path Descriptor	Waypoint Identifier	Fly-over	Course/Track °M(°T)	Time (min)	Turn direction	Altitude (ft)	Speed (kt)	Coordinates	VPA/RDH	Navigation specification	Remarks
001	HM	TENUL	Y	320(312.7)	1	R	-7 000 +6 000	- 210	33°14'01.6"N 126°55'08.7"E	-	RNAV 1	-

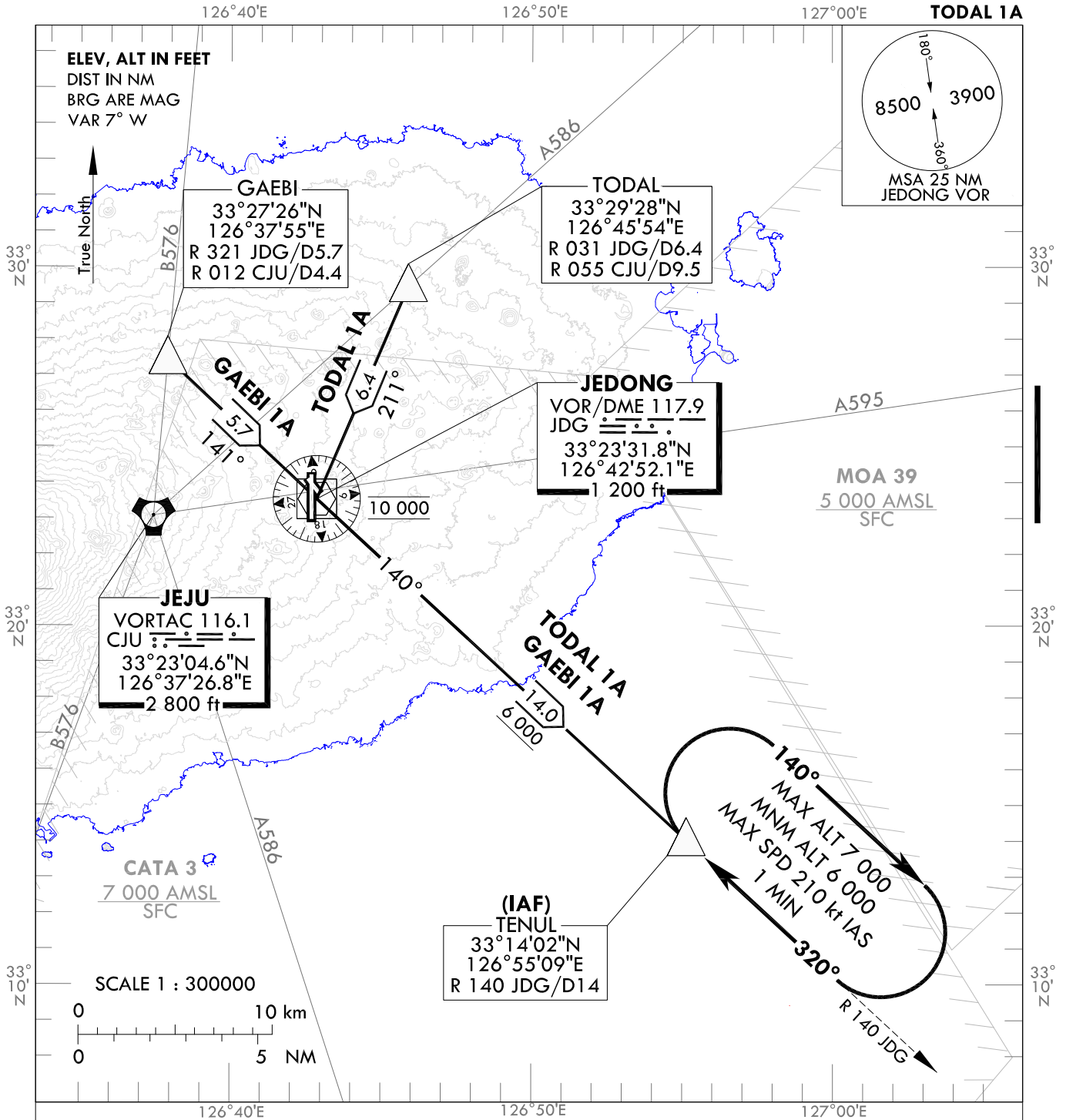
Change : Amended holding procedure.

STANDARD ARRIVAL CHART
INSTRUMENT (STAR) - ICAO

TRANSITION ALT 14 000
TRANSITION LVL FL 140

JEJU APP 121.2
124.05
JEONGSEOK TWR 124.35

JEJU/Jeongseok(RKPD)
RWY 01
GAEBI 1A
TOTAL 1A



GENERAL INFORMATION

1. Within JEJU TMA, maximum 250 kt IAS below 10 000 ft.
2. Maximum holding speed 210 kt IAS at TENUL.

DESIGNATOR	FROM	ROUTE	DESCENT ALTITUDE
GAEBI ONE ALPHA (GEB 1A)	B576	GAEBI - JDG - TENUL	Cross JDG at 10 000 ft, TENUL at or above 6 000 ft.
TODAL ONE ALPHA (TDL 1A)	A586	TODAL - JDG - TENUL	Cross JDG at 10 000 ft, TENUL at or above 6 000 ft.

Change : Information of ALT restriction for JDG.

INTENTIONALLY

LEFT

BLANK